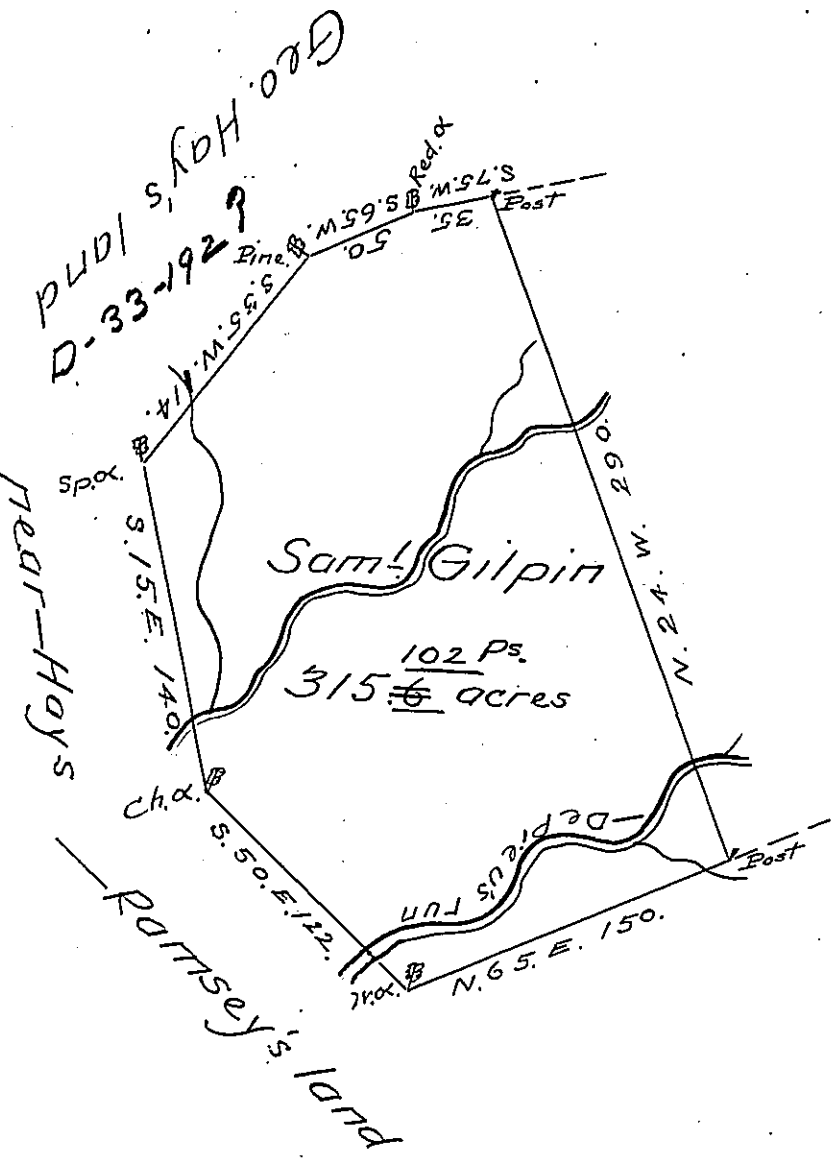


Courses & Distances

S. 75. W.	35.
S. 65. W.	50
S. 35. W.	114.
S. 15. E.	140.
S. 50. E.	122.
N. 65. E.	150
N. 24 W.	290.

C-68 71



Draught of a tract of land situate in Greenwood township Cumberland County containing three hundred & fifteen acres & ^{102 ps.} ~~six tenths of an acre~~ of the usual allowance of six per cent for roads &c. Surveyed May 5th 1785 for Samuel Gilpin in Pursuance of a warrant from the Honorable the Vice President of the Supreme Executive Council; Dated at Philad^a Jan^y the 5th 1785

PF

Ja^s Harris D.S.

To John Lukens Esq^r }
 Surveyor General } ~

IN TESTIMONY that the above is a copy of the original remaining on file in the Department of Internal Affairs of Pennsylvania, made conformably to an Act of Assembly approved the 16th day of February, 1833, I have hereunto set my Hand and caused the Seal of said Department to be affixed at Harrisburg, this Twenty fifth day of October 1904.

George R. Brown
 Secretary of Internal Affairs.